



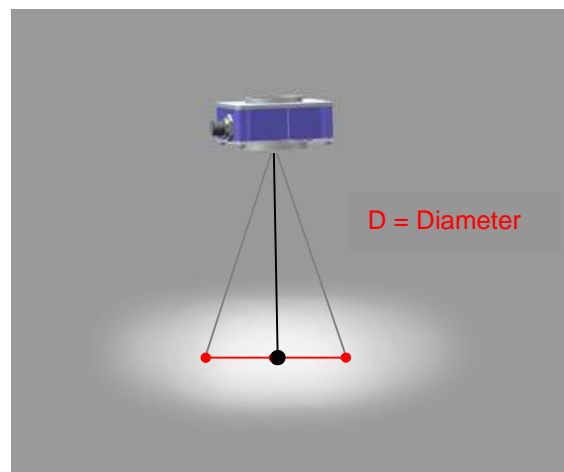
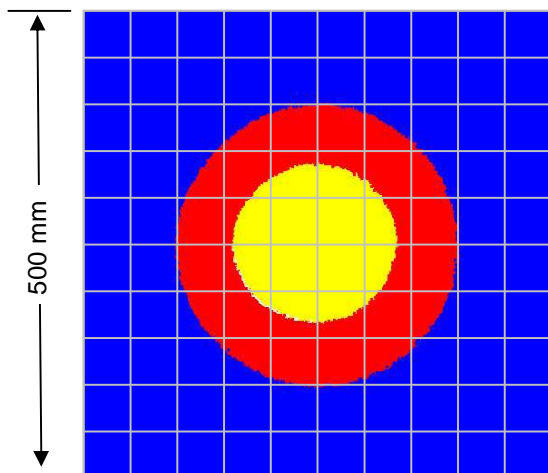
Brightness distribution is measured using a CCD camera system. Three levels are expressed by areas and colors. The highest brightness is 100% and the other areas are assigned a percentage according to their measured value. Data is collected from testing red and white LED lights. An output difference between lights is normal and is the result of LED tolerances from the manufacturer.

Effective working range: 150mm – 1 meter (6" – 40")

R80 with Standard Lenses (Wide)

Working Distance mm (inches)	Pattern (80%-100% measured intensity) mm (Inches)
250mm (10")	90mm(3.5 ") D
500mm (20")	180mm(7") D
750mm (30")	270mm(10.5") D
1m (40")	360mm(14") D

Brightness Distribution
Measured at 500mm (20")



Brightness Level

