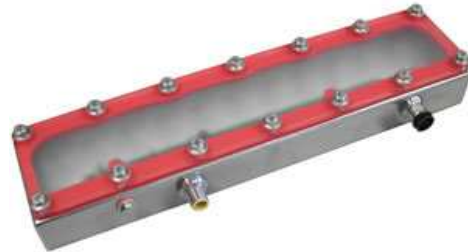
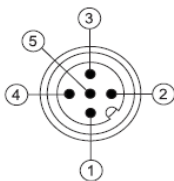


Features

- IP68 Standards
- Stainless Steel 316 Housing
- Meets FDA Compliancy
- Designed to operate in food applications
- Driver built in – No External wiring to a driver
- Continuous operation or Strobe mode
- Dimmable via built in potentiometer
- Analog intensity via 0-10VDC signal
- PNP and NPN Strobe input



Electrical Input	Voltage - 24 VDC +/- 5% Maximum 20 Watts	
Analog Intensity	The output is adjustable from 10-100% of brightness by a 0 -10 VDC signal	
Dimmable	The output is manually adjustable from 10-100% of brightness by potentiometer	
Continuous Mode	Light will be in continuous mode by leaving signal on strobe input	
Strobe	PNP ▶ +5VDC or greater to activate.	NPN ▶ GND (<1VDC) to activate
Strobe Mode	The Light will operate in either continuous or strobe mode. In strobe mode, the output pulse width will track the pulse width of the strobe pulse.	



1 = 24VDC
2 = NPN STROBE
3 = GND
4 = PNP STROBE
5 = 0-10VDC Analog

Standard M12 mating cable color code:

BROWN
WHITE
BLUE
BLACK
*GRAY (GREEN/YELLOW)

* 5 pin Standard M12 mating cable must be used: +VDC must be connected to pin 5 if Analog 0-10 VDC is not used.

LW300 – XXX – X* —» Part Number Key

Product Family:
Linear Light
LW300

Color:
625 – Red
White – WHI
470 – Blue
505 – Cyan
530 – Green
IR 850nm
IR 940nm
UV 395nm
UV 365nm

Lenses:
W - Wide
L - Line

* Lights come standard with Narrow lenses