



Brightness distribution is measured using a CCD camera system. Three levels are expressed by areas and colors. The highest brightness is 100% and the other areas are assigned a percentage according to their measured value. Data is collected from testing red and white LED lights. An output difference between lights is normal and is the result of LED tolerances from the manufacturer.

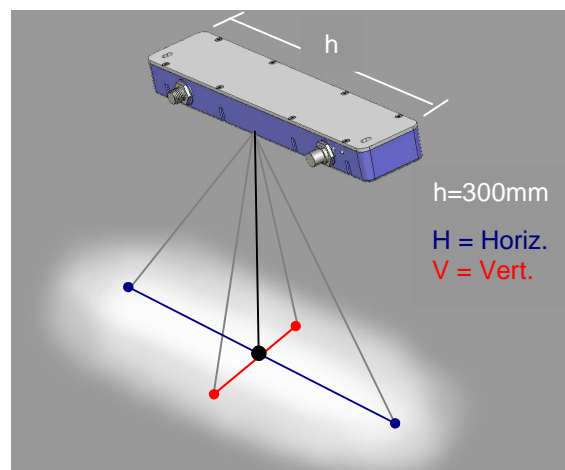
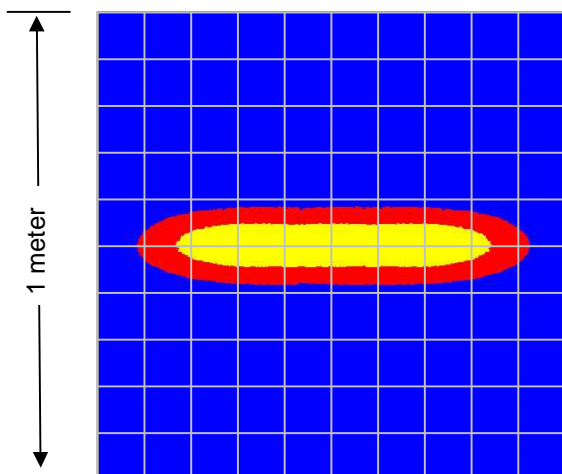


### L300 & ODL300 with Line Lenses

Working Distance mm (inches)	Pattern (80%-100% measured intensity)
	mm (Inches)
.5m (19.7")	330mm(13") H x 50mm(2") V
1m (39.4")	660mm(26") H x 100mm(4") V
1.5m (59")	990mm(39") H x 150mm(6") V
2m (78.8")	1320mm(52") H x 200mm(8") V

Note: 27mm line width at 300mm working distance

#### Brightness Distribution Measured at 1 meter



#### Brightness Level

