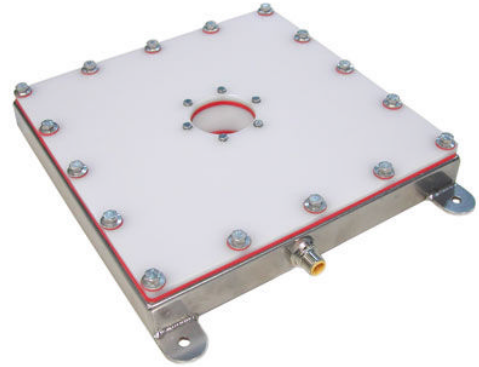
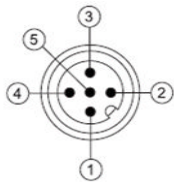


Features

- IP68 Standards
- Stainless Steel 316 Housing
- Meets FDA Compliancy
- Designed to operate in food applications
- M12 Quick Disconnect
- Driver built in – No External wiring to a driver
- Continuous operation or Strobe mode
- PNP and NPN Strobe input



Electrical Input	Voltage - 24 VDC +/- 5% Maximum 50 Watts
Analog Intensity	The output is adjustable from 10-100% of brightness by a 0 -10 VDC signal
Continuous Mode	Light will be in continuous mode by leaving signal on strobe input
Strobe	PNP ▶ +4VDC or greater to activate. NPN ▶ GND to activate
Strobe Mode	The Light will operate in either continuous or strobe mode. In strobe mode, the output pulse width will track the pulse width of the strobe pulse.



1 = 24VDC
 2 = NPN STROBE
 3 = GND
 4 = PNP STROBE
 5 = 0-10VDC Analog

Standard M12 mating cable color code:

BROWN
 WHITE
 BLUE
 BLACK
 *GREEN (Gray)

* 5 pin Standard M12 mating cable must be used: +24VDC must be connected to pin 5 if Analog 0-10 VDC is not used.

DLPW- NC -190x190 – XXX —» Part Number Key

Product Family:
 Diffuse Ring Light
 Wash Down
 DLPW - NC - 190mm x 190mm

Color:
 625 – Red
 White – WHI
 470 – Blue
 530 – Green
 IR 850nm