



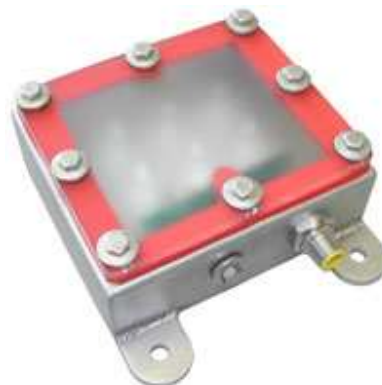
Smart Vision Lights
1887 Holton Road
Suite D 353
Muskegon, MI 49445
www.smartvisionlights.com

PRESS RELEASE

Company develops another high output smart light for Harsh Environment

Muskegon, MI., April 1 -- Smart Vision Lights is pleased to introduce a compact high output "wash down" light. The Brick spot light has 6 high current LED's. The housing is built with 316 stainless steel and is compliant for use in the food industry. Light meets IP68 standards and is corrosion resistant. Wash down light is available in outputs of White, Red, Amber, Blue, Green, Cyan, UV and IR. Wash down light includes an integrated constant current driver with a built in strobe input with option for PNP or NPN trigger control. No need for an external driver to control the light. The integrated driver also includes variable light intensity control. Light can be controlled by an internal pot or a 0-10VDC analog signal.

The wash down Brick light also comes in the OverDrive series. The OverDrive offers the SafeStrobe technology. This unique technology applies safe working parameters to ensure the LED's are not damaged by driving them beyond their limits. This is especially beneficial for overdriving today's new High Current LED's. The OverDrive Brick Light provides repeatable intensity control and pulsing by using a microprocessor to watch and control the power to the LED's for safe operation. The integrated OverDrive controller offers both NPN and PNP strobe input for easy integration to today's smart cameras. Lights have high speed reaction times that offer extremely fast repeatable pulse times. OverDrive lights are the highest power lights in the machine vision industry offering 5 times the intensity of standard high current LED lights.



Contact: Bobby Segraves
bobby@smartvisionlights.com

FOR IMMEDIATE RELEASE